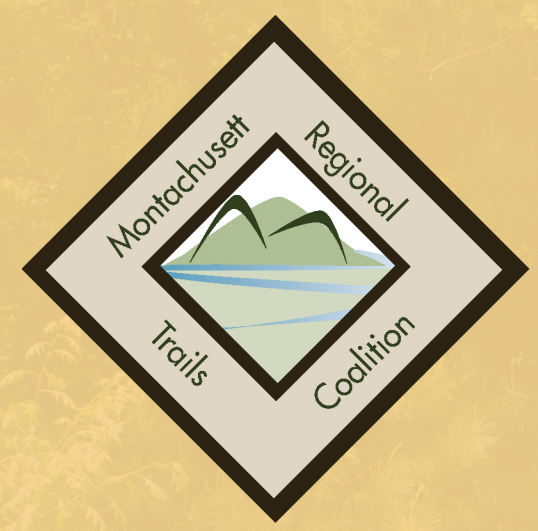


For more information and local community maps please visit mrpc.org, or mrmapper.mrpc.org



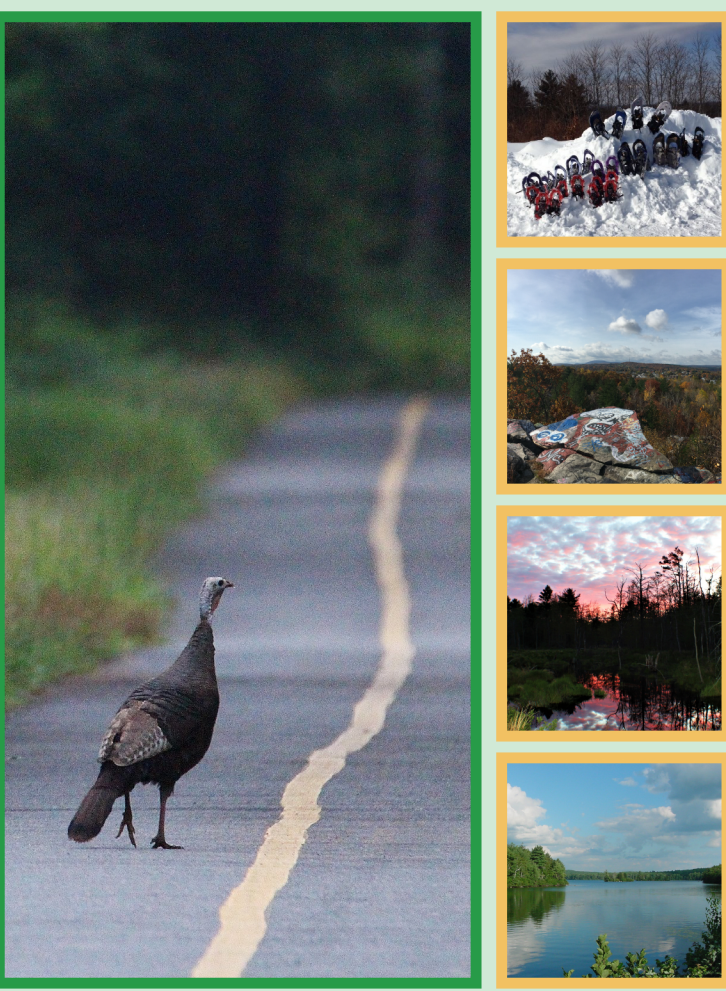
Like us on Facebook to stay up to date on upcoming events! facebook.com/MontachusettTrails

A special thanks to our Community partners and special interest groups for submitting updated trail data and photos for this regional trail guide. Your help was much appreciated!



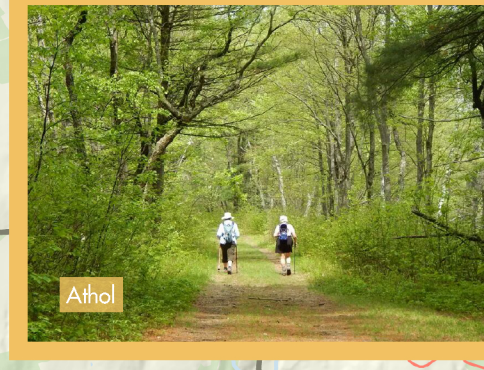
Prepared in cooperation with the Massachusetts Department of Transportation and the U.S. Department of Transportation. The views and opinions of the Montachusett Regional Planning Commission expressed herein do not necessarily state or reflect those of the Massachusetts Department of Transportation or the U.S. Department of Transportation.

Montachusett Region Trail Guide



WEST

Trail Access Disclaimer: The MRTC encourages legal, approved uses of all trails within our region. It is the trail users' personal responsibility to verify that the trail head and associated trail connections are designed for the specific use of interest. If trails are not clearly marked, please contact public or private landowners to confirm that trail access is allowed for your specific use.



POINTS OF INTEREST

Petersham

- 31 Babbitt Wildlife Sanctuary
- 32 The Country Store
- 33 Federated Women's Club State Forest
- 34 Fisher Museum
- 35 Harvard Forest*
- 36 James W. Brooks Woodland Preserve
- 37 North Common Meadow
- 38 Petersham Curling Club
- 39 Petersham Town Forest
- 40 Quabbin Reservoir State Reservation
- 41 Raccoon Hill Wildlife Management Area
- 42 Swift River Reservation
- Petersham State Forest (See Athol)

Phillipston

- 43 Elliott Laurel Reservation
- 44 Fox Valley Wildlife Sanctuary
- 45 Goulding Village Mill Site - Harvard Forest
- 46 Phillipston State Wildlife Management Area
- 47 Popple Camp State Wildlife Management Area
- Harvard Forest (See Petersham)

Royalston

- 48 Birch Hill Dam
- 49 Chase Memorial Forest
- 50 Coddings Meadow
- 51 Doane's Falls Reservation
- 52 Eagle Reserve Conservation Area
- 53 Ehrich Forest
- 54 Fish Brook Wildlife Management Area
- 55 Jacobs Hill Reservation & The Ledges
- 56 Lawrence Brook Wildlife Management Area
- 57 Royalston Falls Reservation
- 58 Royalston State Forest
- 59 Tall Timbers Forest
- 60 Tully Lake Recreation Area & Dam
- 61 Tully Mountain Wildlife Management Area
- 62 Warwick State Forest

Templeton

- 63 Otter River State Forest
- 64 Templeton State Forest
- 65 Ware River Rail Trail

Westminister

- 66 Academy Hill
- 67 Leominster State Forest*
- 68 Muddy Pond Conservation Area
- 69 Wachusett Mountain State Reservation
- High Ridge Wildlife Management Area (See Gardner)
- Midstate Trail (See Ashburnham)

Winchendon

- 70 Birch Hill State Wildlife Management Area
- 71 Millers River State Wildlife Management Area
- 72 Winchendon Community Park
- 73 Winchendon State Forest
- North Central Pathway (See Gardner)

POINTS OF INTEREST

Ashburnham

- 1 Bush Hill
- 2 Midstate Trail*
- 3 Mount Hunger
- 4 Watatic Mountain State Wildlife Management Area*

Athol

- 5 Alan E. Rich Environmental Park
- 6 Bearsden Forest Conservation Area
- 7 Cass Meadow Conservation Area
- 8 Charles Comstock Conservation Area
- 9 Fish Park
- 10 Lake Ellis Beach

- 11 Lawton State Forest
- 12 Millers River Environmental Center
- 13 Mount Grace Land Conservation Trust
- 14 Neale Conservation Area
- 15 Petersham State Forest*
- 16 Silver Lake Park & Beach

Gardner

- 17 Dunn State Park
- 18 Gardner Museum
- 19 High Ridge Wildlife Management Area*
- 20 Mount Wachusett Community College
- 21 North Central Pathway*
- 22 Rome Conservation Area

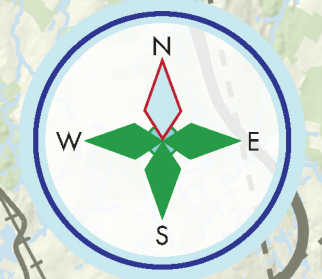
Hubbardston

- 23 Barre Falls Recreation Area
- 24 Comet Pond Boat Ramp
- 25 Cushman Pond Recreation Area
- 26 Hubbardston State Forest
- 27 Hubbardston Wildlife Management Area
- 28 Moosehorn Pond Canoe Launch
- 29 Mt. Jefferson Conservation Area
- 30 Town Beach

* Indicates location occupies space in multiple towns

LEGEND

- Points of Interest
- Major Trails
- Trails
- Railways
- Town Boundaries
- Major Highways
- Open Space



MRTC is a volunteer organization founded by the Nashua River Watershed Association, the Montachusett Regional Planning Commission and the Leominster Trails Stewards.

Mission Statement:

The Montachusett Regional Trails Coalition (MRTC) seeks to advance local and regional connectivity, community commitment, and enthusiasm for trails in the Montachusett Region.



Vision Statement:

- MRTC envisions:
- Fostering trail connections in and around the Montachusett region;
 - Serving as a centralized resource for regional trail planning;
 - Helping our communities see trails as essential infrastructure.

Guiding Principles:

MRTC advances the development of diverse, high-quality trails and greenways that are sustainable and accessible:

- **Connectivity** - Advocate for trail linkages within and between communities to bring people and places together in the region.
- **Accessibility** - Provide trail experiences for people of all abilities and ages.
- **Sustainable Development** - Commit to developing trails that protect the environment and meet user needs through best management practices.
- **Economic Vitality** - Support the local economy by putting North Central Massachusetts on the map as a recreational and tourist destination.
- **Healthy Lifestyles** - Encourage the health, fitness, and well-being of residents by providing multimodal trail opportunities.
- **Awareness & Education** - Work to make trails a part of the community fabric, connect people with the natural world, and provide outdoor learning experiences for people of all ages.



We are folks who are passionate about trails and passionate about our communities. We are working to enhance the quality of life for all with in our region.

We encourage all of you to enjoy the pleasures our trails offer, to help maintain this important layer of green infrastructure, and to advocate for greater support and funding from our elected officials for local and regional trail projects.

POINTS OF INTEREST

Ashby

- 74 Blood Hill
- 75 Damon Pond
- 76 Trap Falls
- 77 Willard Brook State Forest*
- Wataic Mountain State Wildlife Management Area (See Ashburnham)

Ayer

- 78 Ayer Commuter Rail Station & Nashua River Rail Trail
- 79 Pirone Park
- 80 Sandy Pond Beach

Clinton

- 81 Rauscher Farm
- 82 Wachusett Dam
- 83 Wachusett Reservoir

Devens

- 84 Bill Ashe Visitor Facility & Canoe Launch
- 85 Devens Disc Golf
- 86 Devens Museum and Freedom's Way National Heritage Area Office
- 87 Mirror Lake Recreation Area
- 88 Robbins Pond Recreational Area
- 89 United Native American Cultural Center

Fitchburg

- 90 Coggs Hall Park & Bird Sanctuary
- 91 Coolidge Park
- 92 Crocker Conservation Area
- 93 Fitchburg Art Museum
- 94 Fitchburg Intermodal Station
- 95 Fitchburg State University
- 96 Flat Rock Wildlife Sanctuary
- 97 Riverfront Park
- 98 Sheldon Street Gateway Park
- 99 Steamline Trail
- 100 Wachusett Commuter Rail Station

Groton

- 101 Baddacock Pond Boat Launch
- 102 Fitch's Bridge
- 103 Gamlin Crystal Spring
- 104 Gibbet Hill
- 105 Groton Town Forest
- 106 J. Harry Rich State Forest
- 107 Mass Audubon Rocky Hill Wildlife Sanctuary
- 108 Petapawag Canoe Launch (Nashua River)
- 109 Squannacook River Canoe Launch
- 110 Squannacook River Wildlife Management Area*
- 111 Surrenden Farm and General Field
- 112 Throne Hill Conservation Area
- 113 Wharton Plantation
- 114 Williams Barn

Harvard

- 115 Bolton Flats Wildlife Management Area*
- 116 Carlson Orchards, PYO
- 117 Delaney Wildlife Management Area
- 118 Doe Orchards, PYO
- 119 Friendly Crossways Hostel
- 120 Fruitlands Museum
- 121 Harvard General Store
- 122 Holy Hill
- 123 Oxbow National Wildlife Refuge
- 124 Shaker Village
- 125 Town Beach (Bare Hill Pond)
- 126 Town Center
- 127 Westward Orchards Farm Store
- 128 Willard Farm Stand

POINTS OF INTEREST

Lancaster

- 129 Atherton Bridge River Greenway
- 130 Ballard Hill Conservation Area
- 131 Bartlett Pond Conservation Area
- 132 Confarm Forest
- 133 Cook Conservation Area
- 134 Dexter Drumlin
- 135 Eagle Ridge Conservation Area
- 136 Lancaster Town Forest
- 137 Nathaniel Thayer Memorial Park
- 138 Parker Family Forest
- 139 Pellicchia Recreation Area
- 140 Thayer Memorial Forest
- 141 Town Beach

- 142 Turner Pond Conservation Area*
- 143 Windsor Conservation Area
- Bolton Flats Wildlife Management Area (See Harvard)

Leominster

- 144 Barrett Park
- 145 Carter Park
- 146 Doyle Community Park & Center
- 147 Doyle Field
- 148 Fournier Park
- 149 Johnny Appleseed State Park
- 150 Johnny Ro Veterans Memorial Park

- 151 Mass Audubon Lincoln Woods Wildlife Sanctuary
- 152 Monoosnoc Trail (Granite St. Trailhead)
- 153 Monoosnoc Trail (West St. Trailhead)
- 154 North Leominster Commuter Rail Station
- 155 Prospect Park
- 156 Scenic Vista - North Monoosnoc Hill
- 157 Scenic Vista - South Monoosnoc Hill
- 158 Sholan Farms
- Leominster State Forest (See Westminster)

Lunenburg

- 159 Cowdrey Conservation Area
- 160 Harold Harley Viewing Station

Shirley

- 168 Benjamin Hill Park & Pool
- 169 Farandnear Reservation
- 170 Fredonian Nature Center
- 171 Harriet Lyon Conservation Land
- 172 Longley Acres

Sterling

- 178 Mass Central Rail Trail Spur
- 179 Wekepeke Lands

Townsend

- 180 Gazebo on the Common
- 181 Howard Park
- 182 Kids' Kountry Playground
- 183 Old Meetinghouse Park
- 184 Pearl Hill State Park
- 185 Squannacook River Access Point (off of Turnpike Road)
- 186 The Reed Homestead
- 187 Townsend Hill Wildlife Management Area
- 188 Townsend State Forest
- Hunting Hill Wildlife Management Area (See Lunenburg)
- Squannacook River Wildlife Management Area (See Groton & Shirley)
- Willard Brook State Forest (See Ashby)

* Indicates location occupies space in multiple towns

Trail Access Disclaimer: The MRTC encourages legal, approved uses of all trails within our region. It is the trail users' personal responsibility to verify that the trail head and associated trail connections are designed for the specific use of interest. If trails are not clearly marked, please contact public or private landowners to confirm that trail access is allowed for your specific use.



For more information and local community maps please visit mrpc.org, or mrmapper.mrpc.org

MrMapper

LEGEND

- Points of Interest
- Major Trails
- Trails
- Railways
- Town Boundaries
- Major Highways
- Open Space
- Johnny Appleseed Visitors' Center

