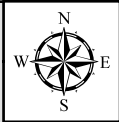
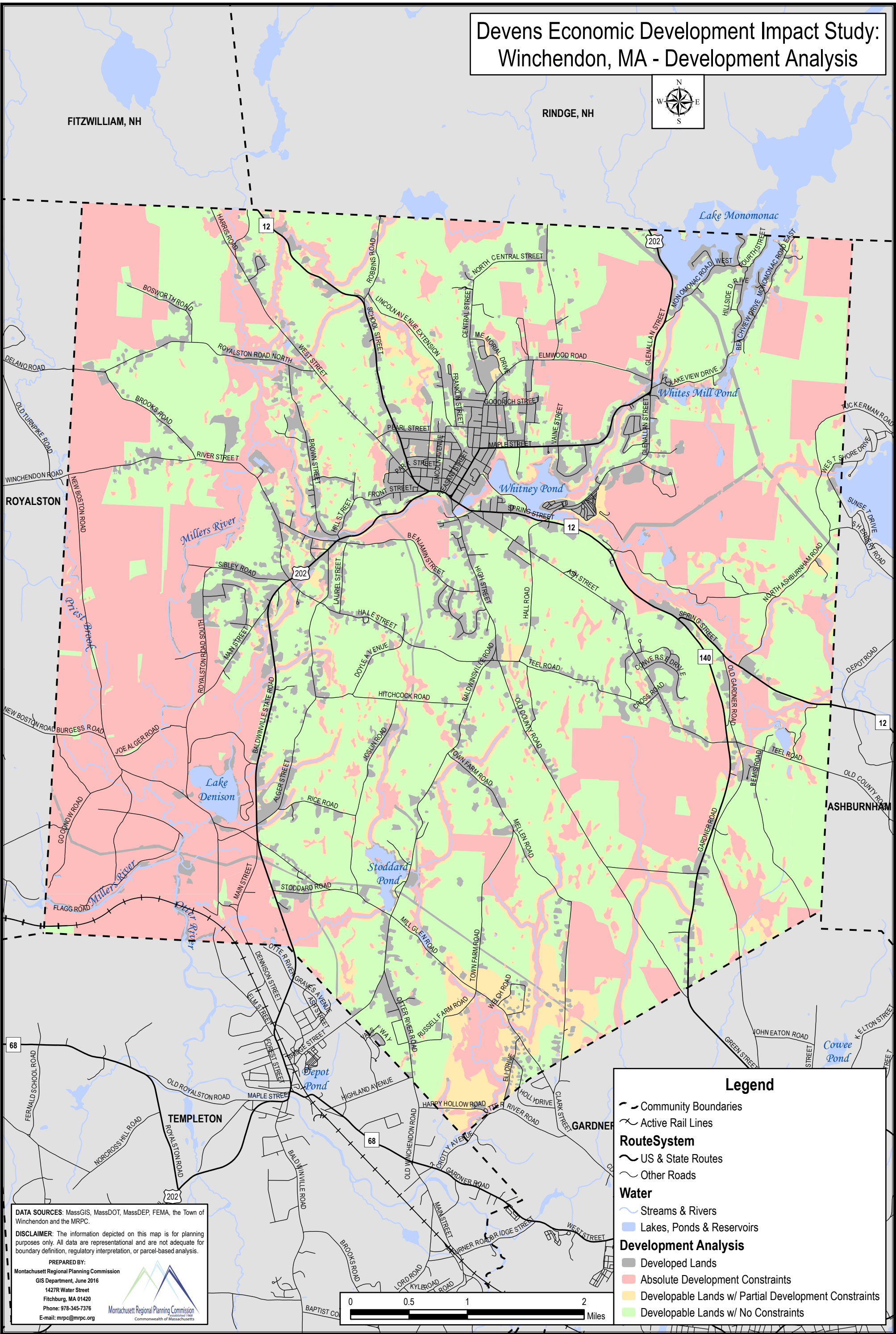


# Devens Economic Development Impact Study: Winchendon, MA - Development Analysis



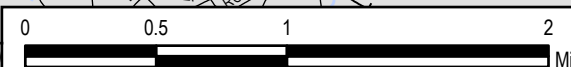
FITZWILLIAM, NH

RINDGE, NH



### Legend

- Community Boundaries
- Active Rail Lines
- Route System**
  - US & State Routes
  - Other Roads
- Water**
  - Streams & Rivers
  - Lakes, Ponds & Reservoirs
- Development Analysis**
  - Developed Lands
  - Absolute Development Constraints
  - Developable Lands w/ Partial Development Constraints
  - Developable Lands w/ No Constraints



**DATA SOURCES:** MassGIS, MassDOT, MassDEP, FEMA, the Town of Winchendon and the MRPC.

**DISCLAIMER:** The information depicted on this map is for planning purposes only. All data are representational and are not adequate for boundary definition, regulatory interpretation, or parcel-based analysis.

**PREPARED BY:**  
 Montachusett Regional Planning Commission  
 GIS Department, June 2016  
 1427R Water Street  
 Fitchburg, MA 01420  
 Phone: 978-345-7376  
 E-mail: mrpc@mrpc.org