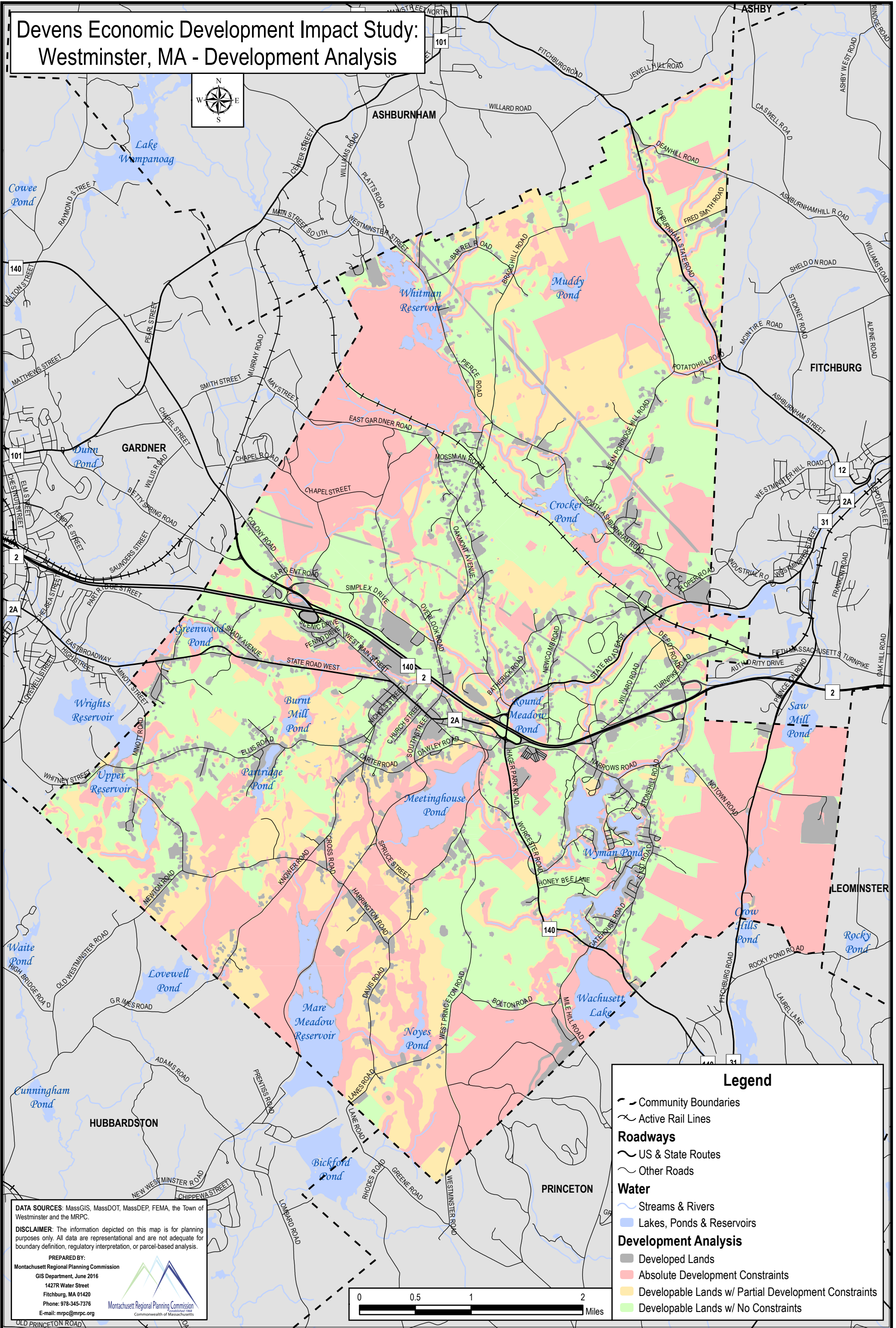
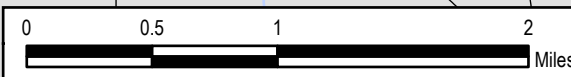


Devens Economic Development Impact Study: Westminster, MA - Development Analysis



Legend

- Community Boundaries
- Active Rail Lines
- Roadways**
 - US & State Routes
 - Other Roads
- Water**
 - Streams & Rivers
 - Lakes, Ponds & Reservoirs
- Development Analysis**
 - Developed Lands
 - Absolute Development Constraints
 - Developable Lands w/ Partial Development Constraints
 - Developable Lands w/ No Constraints



DATA SOURCES: MassGIS, MassDOT, MassDEP, FEMA, the Town of Westminster and the MRPC.

DISCLAIMER: The information depicted on this map is for planning purposes only. All data are representational and are not adequate for boundary definition, regulatory interpretation, or parcel-based analysis.

PREPARED BY:
 Montachusett Regional Planning Commission
 GIS Department, June 2016
 1427R Water Street
 Fitchburg, MA 01420
 Phone: 978-345-7376
 E-mail: mrpc@mrpc.org