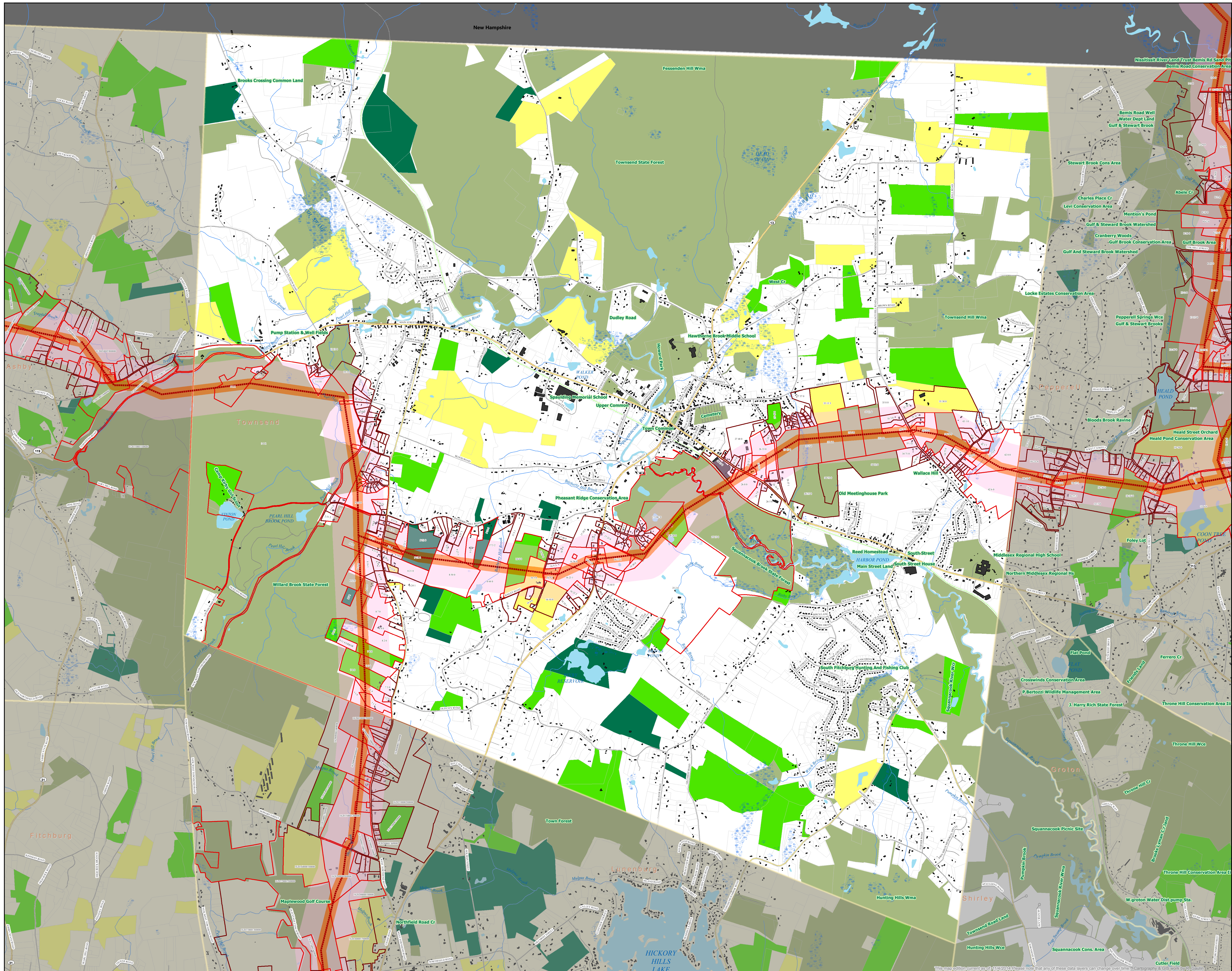


# Parcels Potentially Affected by TGP/Kinder Morgan Gas Pipeline in TOWNSEND, Mass,



- Legend**
- Pipeline (Profile) Composite
  - Pipeline (Profile) +/- 200 feet
  - Pipeline (Profile) +/- 1,000 feet
- Parcels near Pipeline +/-1000 ft Crossed By Pipeline**
- Yes
  - No
- Chapter 61 Conservation Parcels**
- 61 A Agriculture
  - 61 B Recreation
  - 61 Forestry
- Protected Open Space**
- Protected Open Space
- Road Classification**
- Limited Access Highway
  - Multi-lane Hwy, Not Limited Access
  - Other Numbered Highway
  - Major Road, Collector
  - Minor Road, Ramp
- Railroads - Type of Service**
- Active Rail Service
  - Right-of-way used for Hiking and Biking
  - Abandoned Service ROW in Public Interest
  - Abandoned or Out of Service
  - Unknown
- Existing Transmission Lines by Type**
- Pipeline
  - Pipeline Arbitrary Extension
  - Powerline
  - Powerline Arbitrary Extension
- Building Structures**
- from 2011 - 2013 orthophotos

**DISCLAIMER:** The accuracy of the pipeline route depicted on this map cannot be precisely established without better data directly from Kinder Morgan. The FERC Pre-Filing Maps upon which this line is based were shown on USGS 1:24,000 scale maps compiled between the 1940s and 1950s, thus were out of date and at an inappropriate scale to depict adequate detail.

**Methodology and Data Sources:**  
 Pipeline path: Kinder Morgan FERC Pre-Filing Map Documentation dated 09/14/2014 shown over fragments of scanned USGS topographic quadrangle maps. PDF images were used for comparison to digitize the path using public GIS data over similar vintage topographic maps (where available). Note that the line recreated here is a composite of portions provided by Berkshire Regional Planning Agency and Northern Middlesex Council of Governments, Hampshire, Franklin, Worcester Counties redigitized by R. Gaulin.  
 Other data layers: Commonwealth of Massachusetts (MassGIS) as developed by various agencies and municipalities. Chapter 61 parcels derived from state-wide "Level 3 Parcel Layer" based on land use codes, thanks to MassGIS/active Office of Energy and Environmental Affairs for help with those queries.  
 Parcels within 1,000 feet of pipeline are labeled with Assessor's map & lot number. This format varies between municipalities.  
 Detailed descriptions of most of the data layers included on this map are available online at: <http://www.mass.gov/research-and-tech/ser-and-support/application-services/geographic-information-massgis/datalayerlist.html>

\*Tennessee Gas Pipeline Company, LLC (9/15/14 FERC public pre-filing application maps, proprietary Tennessee Gas Pipeline, LLC, found at [http://tribune-herald.com/dms/ViewFile.aspx?document\\_id=14281556](http://tribune-herald.com/dms/ViewFile.aspx?document_id=14281556), Map04 Market Path Component 2x.pdf, Map05 Lateral File x.pdf.

**Further Disclaimer:**  
 Data provided on this map is not sufficient for either boundary determination or regulatory interpretation. Neither Northern Middlesex Council of Governments (NMCOG), Berkshire Regional Planning Commission, nor R. Gaulin, make any warranty, expressed or implied, nor assume any legal liability or responsibility for the accuracy, completeness, or usefulness of the Geographic Information System (GIS) Data or any other data provided herein. The GIS data is illustrative only material and should not be considered for any other purpose. The data does not take the place of a professional survey and has no legal bearing on the true shape, size, location, or existence of a geographic feature, property line, or political representation. Any use of this information is at the recipient's own risk. It's actually pretty good, though, notwithstanding the foregoing and abovementioned excruciatingly logistic disclaimer.

