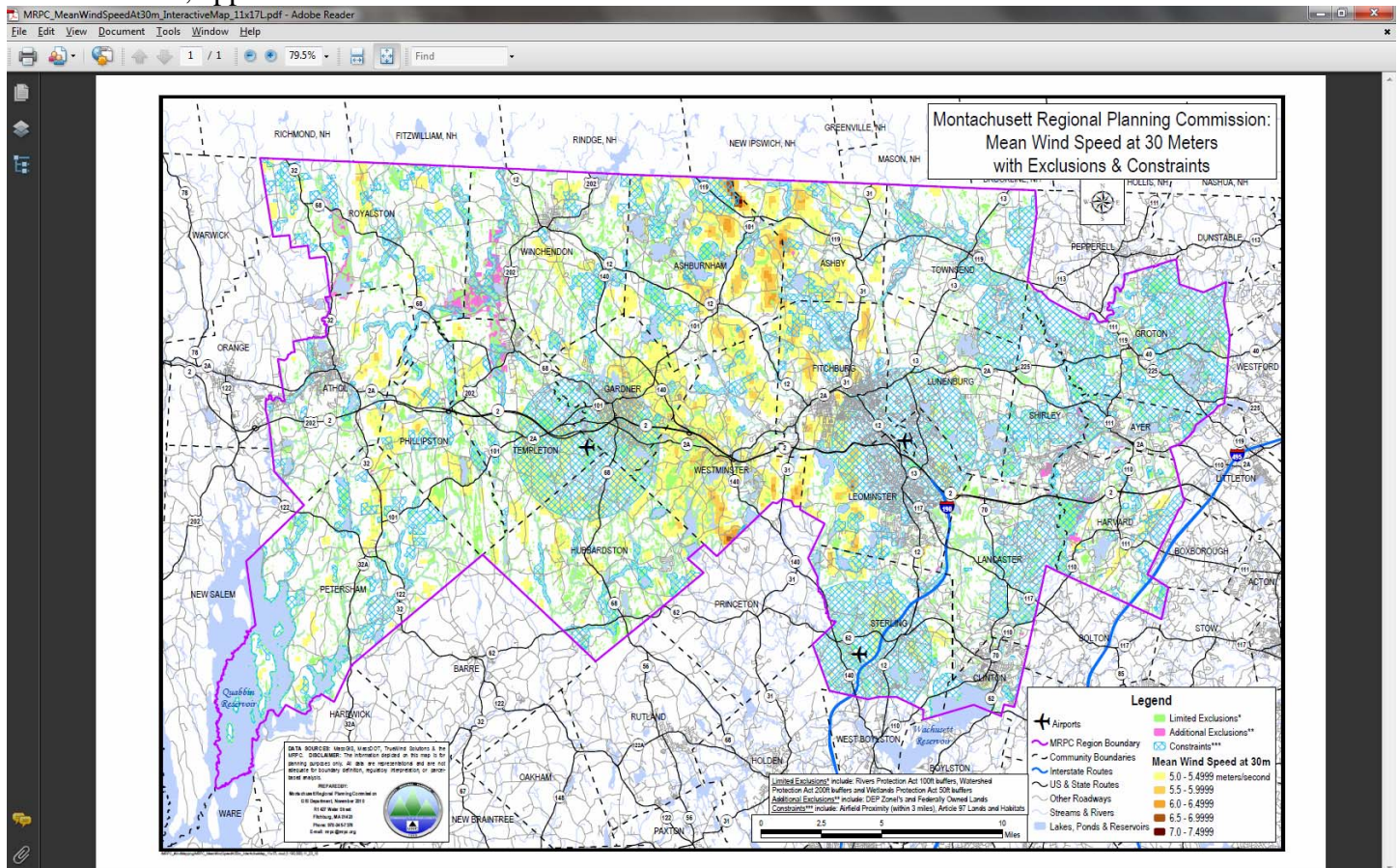



# WIND MAPPING PROJECT

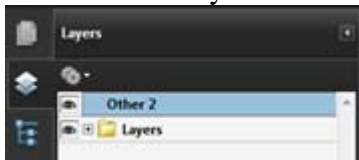
## INTERACTIVE MAP - USER MANUAL


The use of the Interactive PDF Map is limited to users who have Adobe Reader version 6.0 or higher. To download the latest version of Adobe Reader go to <http://get.adobe.com/reader/>.


When you open the Interactive Map it should, depending on the map you are opening and your version of Adobe Reader, appear similar to this:




In order to interact with the map you will need to click on the "Layers" icon  on the left-hand side of the document. You will notice that an area will appear and contain two headings, "Other 2" and "Layers" (see below). "Others 2" contains the map document elements such as the title, north arrow, legend, scale and disclaimers. Layers contains all of the individual data layers contained in the map.




In order to make these elements "invisible" or "visible" you can click the eye icon  to the left of each element to toggle the visibility. Try this now to see how the document changes.

In order to see the individual data layers contained in the map click the plus sign icon  to the left of the "Layers" heading. You will notice that there are several more headings that appear under the "Layers" heading and will look similar to this:



Under the "Layers" heading- "Other" is comprised of the map outline only. "Political Boundaries", "Infrastructure" and "Hydrography" are "Group Layers". These "Group Layers" are an assembly of individual data layers under one main heading. Click the plus sign icon  next to each of these "Group Layers" to see the individual layers that it is comprised of.



Again, you can click the eye icon  to the left of each element to toggle the visibility. Try this now to see how the document changes.

As is the case with all Adobe PDF documents you can "Zoom" and "Pan" through the map in order to focus on a specific area. In order to use the "Zoom" and "Pan" tools available click on the "Tools/Select & Zoom" options from the top menu (see below).



Questions regarding this project should be directed to Jason Stanton, GIS Director, at 978-345-7376 x313 or [jstanton@mrpc.org](mailto:jstanton@mrpc.org) or to Glenn Eaton, Executive Director, at 978-345-7376 x310 or [geaton@mrpc.org](mailto:geaton@mrpc.org).