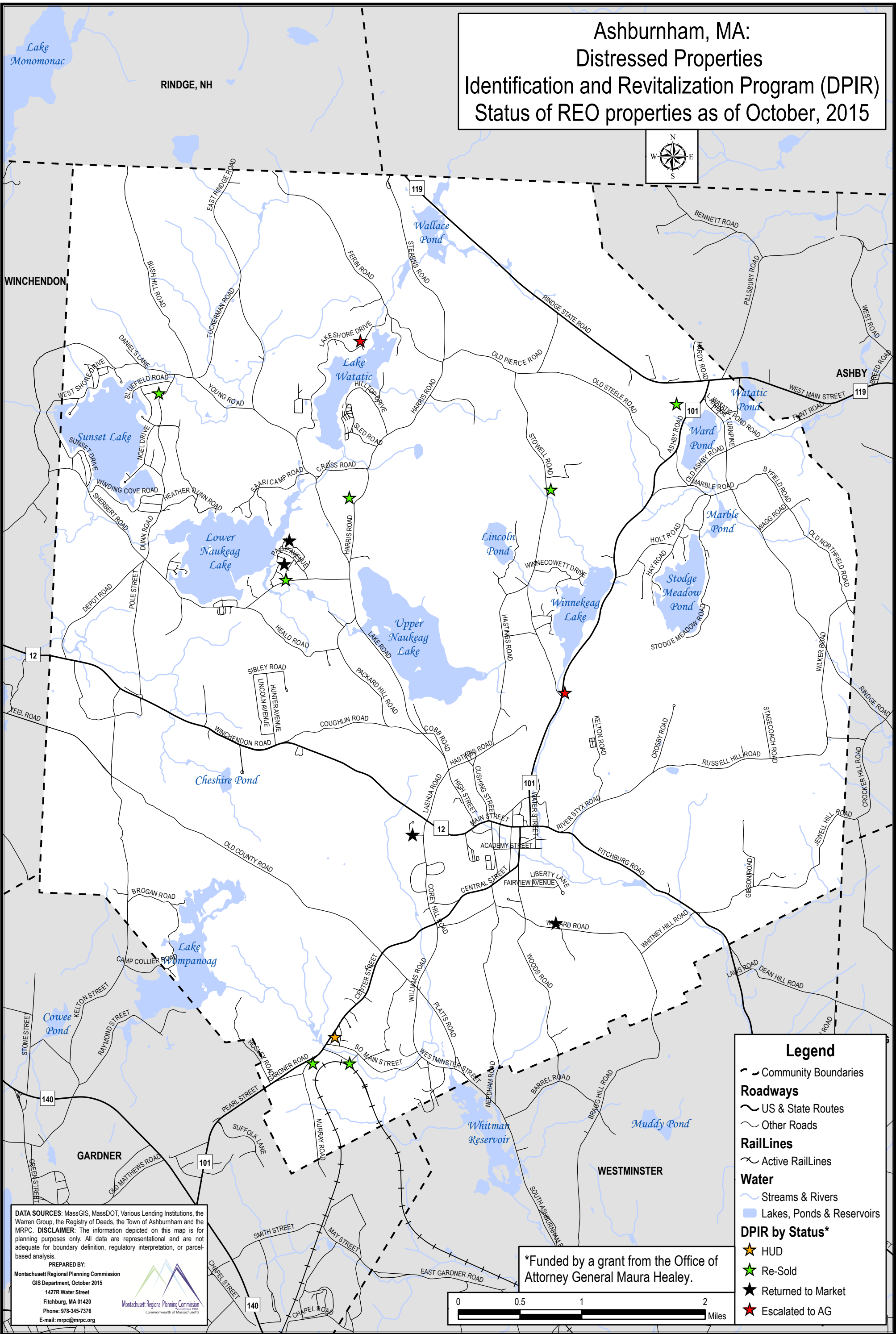


Ashburnham, MA:
Distressed Properties
Identification and Revitalization Program (DPIR)
Status of REO properties as of October, 2015



Legend

Community Boundaries

Roadways

US & State Routes

Other Roads

RailLines

Active RailLines

Water

Streams & Rivers

Lakes, Ponds & Reservoirs

DPIR by Status*

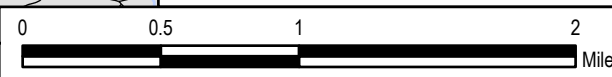
HUD

Re-Sold

Returned to Market

Escalated to AG

*Funded by a grant from the Office of Attorney General Maura Healey.



DATA SOURCES: MassGIS, MassDOT, Various Lending Institutions, the Warren Group, the Registry of Deeds, the Town of Ashburnham and the MRPC. **DISCLAIMER:** The information depicted on this map is for planning purposes only. All data are representational and are not adequate for boundary definition, regulatory interpretation, or parcel-based analysis.

PREPARED BY:

Montachusett Regional Planning Commission

GIS Department, October 2015

1427R Water Street

Fitchburg, MA 01420

Phone: 978-345-7376

E-mail: mrpc@mrpc.org